

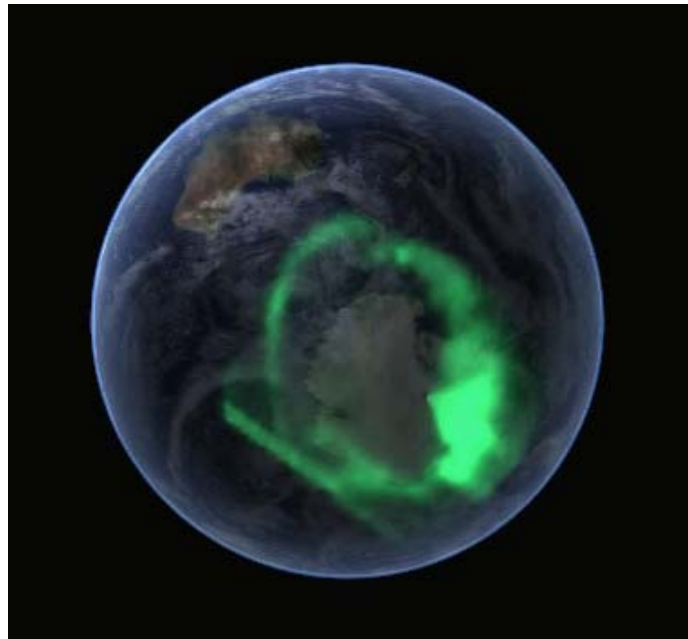
The Money Code: Part 2

The Revealing of the Meaning of the Lost Symbol and the Map on the Great Seal.

By William Frederick; M.Div., B.A. Mathematics
Author of [The Coming Epiphany](#); Your Guide to
Understanding End Times Bible Prophecy

Download it for FREE Today!

(Note: This material is copyright protected. I give permission for its use with attribution to William Frederick and linking to this page)



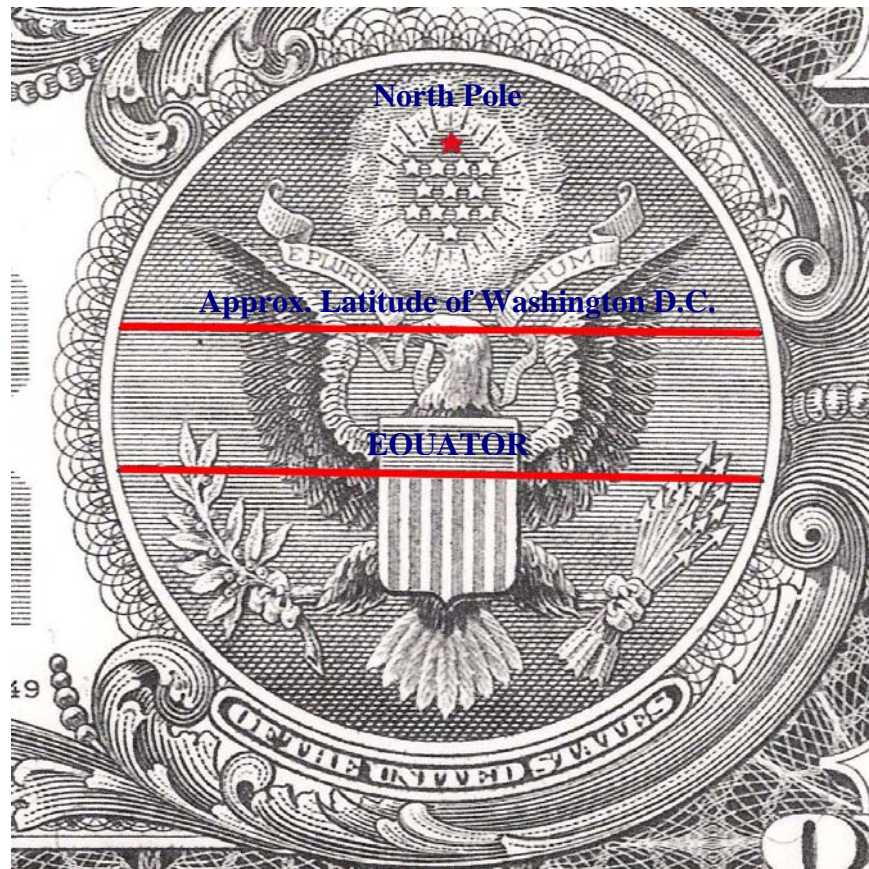
What is coming out of the pole? See the green cone shape? It is magnetism. Why the cone shape? Some believe this picture is evidence that a certain theory about the earth and the poles are true. What theory? In the first article of this series I revealed date ciphers that I found on the Great Seal and dollar bill. The most prominent of those dates are 2/22/2010 and 12/21/2012 pointing to the political/financial destruction of the United States and the end of The Old World Order and beginning of the New World Order respectively. In this article I will reveal the map cipher on the Great Seal. Let me start off by saying that the map will take us on a journey to the poles and a theory that seems almost unbelievable but on the other hand is profound to the point of awakening one to

¹ <http://www.abovetopsecret.com/forum/thread329423/pg1>

the stark reality of the coming great deception and great spiritual “falling away” that is close to coming to fruition.

To reveal the map we are going to assume that the Great Seal represents a globe, we are then going to assign an equator for each half of the seal and then from that equator calculate the latitude of prominent features on the seal. For all of our calculations we will use a 400% enlargement of the Great Seal on the dollar bill. The first calculation that we will make is to determine the scale for latitude. Taking the part of the seal with the eagle and assigning the equator to the bottom line of the shield and the middle of the top star as the North Pole and measuring the distance you get approximately 58 mm. Next take 90 degrees (amount of degrees latitude from equator to North Pole) and divide by 58 mm to yield the scale of 1.5517 degrees per mm on a 400% enlargement.

If we measure from the bottom line on the shield, our equator, to the eagle’s eye that distance is approximately 25 mm. 25mm times our scale of 1.5517 degrees per mm yields a latitude of approximately 38.8 degrees. That latitude puts us approximately at Washington, D.C. that has an official latitude of 38.8921. So if the Great Seal is thought of as a globe with the bottom line of the shield as the equator, the eagle’s eye would be Washington D.C. and the top star the North Pole.



How about the other side of the Great Seal does it have a map on it? Yes it does. We will use the same latitude/distance scale as on the first part of the seal but we will set the

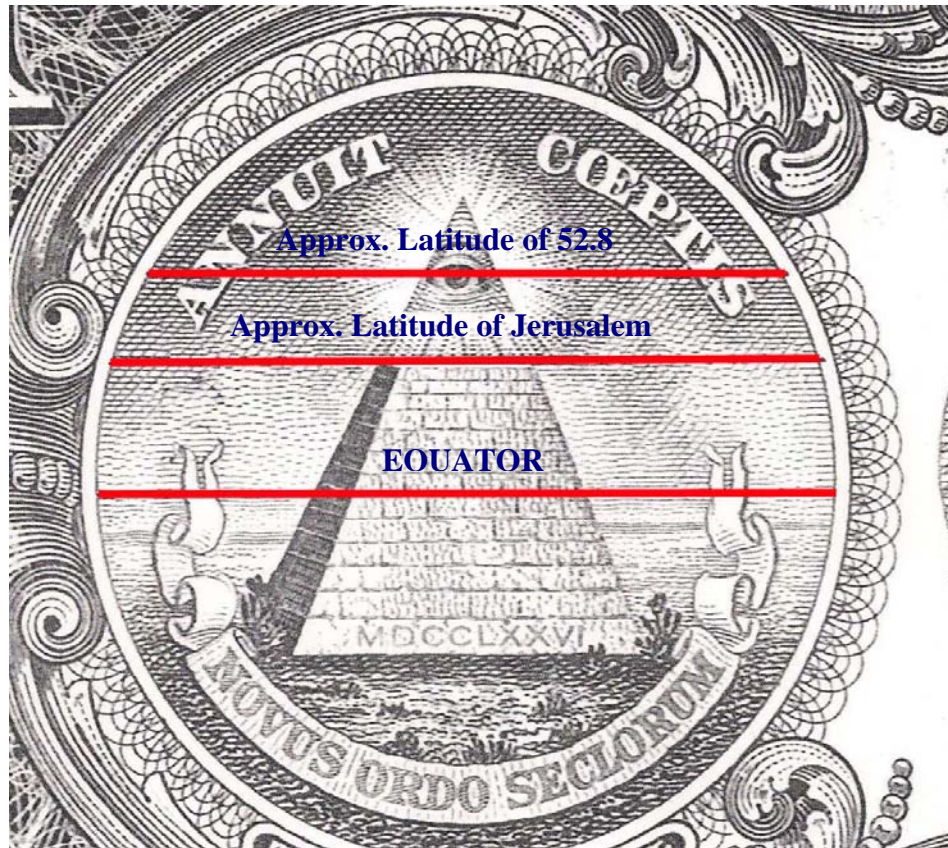
equator at the bottom of the cut out part of the two ribbons. With that line as the equator if we measure to the top of the pyramid that distance is approximately 20.5 mm. 20.5 mm times our scale of 1.5517 corresponds to latitude of 31.8 degrees. That latitude puts us approximately at Jerusalem, which has an official latitude of 31.7857.

Why Jerusalem? It is easy to see why the eagle's eye would correspond with Washington D.C., because we are dealing with the Great seal of the United States, but why Jerusalem on the other half? Because that is where the third temple will be built. See the capstone of the Great Pyramid represents the antichrist and his kingdom—the New World Order—and he will rule the world from Jerusalem after he performs the abomination of desolation in the third temple. Remember also from [The Money Code: Part 1](#) that the top right corner of the pyramid corresponds to the date 12/21/2012. That is the date that the Old World Order is to end and the New World order is to begin. It is after that date that the antichrist is to arrive on the scene to solve the world's problems and will perform the abomination of desolation in the new temple, proclaim that he is god, take over the world and begin persecuting Jews and Christians. So it is fitting for Jerusalem to be represented by the top of the pyramid and be associated with 12/21/2012

How about the latitude of the eye of Horus, does it represent anything? The eye is approximately 34 mm from the equator. 34 mm times our scale yields a latitude of 52.8 degrees. What does that represent, I can only speculate, it could be the birth place of the antichrist or where he lives, or it could be the latitude of the Templar treasure that is reported to contain a copy of the Ark of the Covenant. Whatever that latitude represents it is interesting to note that latitude 52.8 goes through the U.K. which happens to be the “mother” of the United States, is a very probable birthplace of the antichrist, and is rumored to be one of the possible resting places of the Knights Templar treasure. It is also interesting to note that at latitude 52.8 in Wales is a surfing spot called Hell's Mouth. Is that a clue linking the capstone to Hell or its entrance? As you will see, I believe it is. Upon further research I have discovered that 52.8 or the numbers 528 are quite significant.²³ The number 528 has a connection to the antichrist, the Templar treasure, DNA, tarot cards, healing frequencies, and other esoteric things. It is even claimed that the number 528 holds a key to unlocking great information.

²[Illuminati Under the Microscope: Obama Berlin and Denver Speeches link to 528 Hz](#)

³[‘KEY 528’ Barack Obama & the Saxon hero Widukind « Reconciliation of Science and Religion](#)



There is something else regarding the map on the Great Seal that will lead to what I described in the beginning of this article as unbelievable. This is a little hard to explain and to put into words so let's back up a little bit. When I was investigating the date ciphers on the dollar bill, God prompted me to watch the movie National Treasure, mainly because it featured the time on the clock on the hundred dollar bill. It was from that movie that I received a clue that the Great seal not only included a date cipher but also included a map. For see the illuminati love to give information through Hollywood movies. Do you see the clue of the hour glass and globe on the picture of this medallion from the movie. That tipped me off that there was a hidden map on the seal.



It was from that movie that I also received another clue in deciphering the Great Seal. The clue was contained in this quote from the movie; "The vision to see the treasured past." In the movie they used a special pair of glasses to see an invisible clue on the declaration of independence that would appear while looking through the glasses. The thought came to me why not look at the Great Seal with a special lens to see if it would reveal anything. I brought a photo of the Great Seal into Adobe Photoshop and applied the neon glow filter and here is what appeared around the capstone.



Look at the shape of the rays around the capstone. As I pondered I thought that they almost look like a shape I have seen before. I started looking at the map of the world to see what country or continent the shape would most closely match. As best as I can tell the shape most closely resembles the Arctic. Of course the Arctic ice cap changes but it is a close match to the shape as depicted below using an overlay from the World Atlas Arctic map.⁴ I also find it interesting that the other side of the seal also had an association with the arctic, namely the North Pole.



So what does the Arctic and North Pole have to do with the Great Seal, the antichrist and satan? This is really hard to explain but bear with me. There is a theory that has been around for many years that the earth is hollow and one of the main entrances to the “underworld” is in the Arctic. The theory further suggests that there is a civilization of alien origin more advanced than ours that live there. There have been several books written about this topic and several credible eyewitness accounts from people who claim to have been there, including Admiral Byrd. Here is his account.

The first public scientific evidence occurred in 1947 when Rear Admiral Richard E. Byrd of the United States Navy flew directly to the North Pole and instead of going over the pole, actually entered the Inner Earth. In his diary with other witnesses, he tells of entering the hollow interior of the Earth, and traveling 1700 miles over mountains, lakes, rivers, green vegetation and animal life. He tells of seeing monstrous animals resembling the mammoth of antiquity moving through the underbrush. He eventually found cities and a thriving civilization.

His plane was finally greeted by flying machines, the type he had never seen before. They escorted him to a safe landing place and he was graciously greeted by emissaries from Aghartha. After resting, he and his crew were taken to meet the Ruler of Aghartha. They told him that he had been allowed to enter Aghartha because of his high moral and ethical character. They went on to say that ever

⁴ <http://www.worldatlas.com/webimage/countrys/polar/arctic.htm>

since the United States had dropped atomic bombs on Hiroshima and Nagasaki, they had been very concerned for their own safety and survival. They had decided that it was time to make greater contact with the outside world to make sure we didn't destroy this planet and their civilization with it. They had been allowed in for this express purpose, as a way of making contact with someone they trusted.

To make a long story short, Admiral Byrd and his crew, upon their visit, were guided by their hosts in their plane back to the outer world, and their lives were changed forever.⁵

Here are images from the same website claiming to be pictures of the hole in the earth.



Here is yet another account.

- *The Hollow Earth* - Dr. Raymond Bernard tells stories about people who have entered the inner earth and what has happened to them. It mentions a photograph published in 1960 in the *Globe and Mail* in Toronto, Canada which shows a beautiful valley with lush hills. An aviator claimed that he had taken the picture while flying into the North Pole.

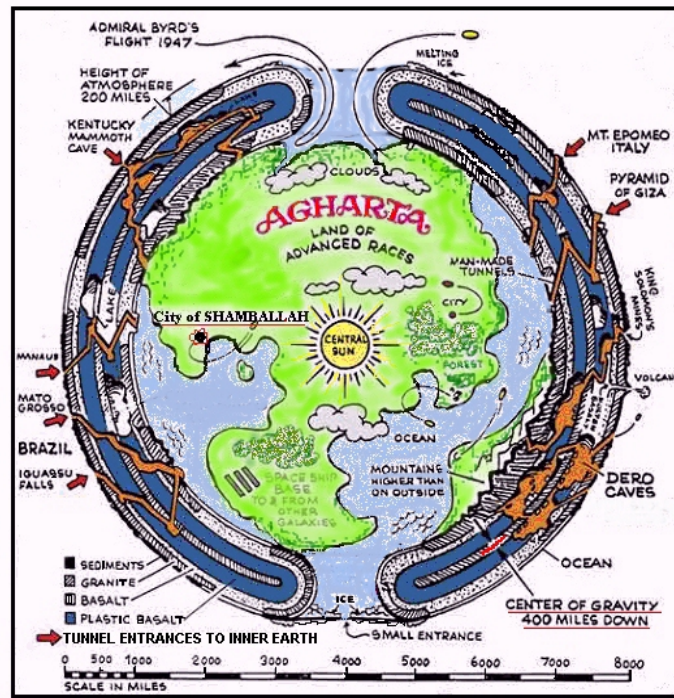
Bernard also authored *Flying Saucers from the Earth's Interior*. His real name was Walter Seigmeister. In his *Letters from Nowhere*, Bernard claims to have been in contact with great mystics in secret ashrams and with Grand Lamas in Tibet. He was, in short, another Gurdjieff. Dr. Bernard "died of pneumonia on September 10, 1965, while searching the tunnel openings to the interior of the Earth, in South America." Bernard seems to have accepted every legend ever associated with the hollow Earth idea, including the notions that the Eskimos

⁵ <http://www.thenewearth.org/InnerEarth.html>

originated within the Earth and an advanced civilization dwells within even now, revving up their UFOs for occasional forays into thin air. Bernard even accepts without question Shaver's claim that he learned the secret of relativity before Einstein from the Hollow Earth people.

Admiral Byrd actually referred to Antarctica as "The Land of Everlasting Mystery". He once wrote: "I'd like to see that land beyond the (North) Pole. That area beyond the Pole is the Center of the Great Unknown."⁶

And yet another lengthy account



The biggest cover-up of all time is the fact that there is a civilization of people living in the center of Earth, whose civilization's name is known as "Aghartha". This may be hard for some of you to believe. I know it was for me at first, however, I now have an absolute knowingness of the truth of this.

To begin with, the Buddhists, in their theology fervently believe in its existence. They believe it to be a race of super men and women who occasionally come to the surface to oversee the development of the human race. They also believe that this subterranean world has millions of inhabitants and many cities, and their capital is Shamballa. The Master of this world was believed to have given orders to the Dalai Lama of Tibet, who was his terrestrial representative. His messages were being transmitted through certain secret tunnels connecting this inner world with Tibet.

⁶ <http://www.crystalinks.com/hollowearth.html>

The famous Russian channel, Nicholas Roerich, who was a channel for the Ascended Master, El Morya, claimed that Lhasa, the capital of Tibet, was connected by a tunnel with the inner earth, Shamballa. The entrance of this tunnel was guarded by lamas who were sworn to secrecy. A similar tunnel was believed to connect the secret chambers at the base of the great pyramid at Giza, and Agartha.

The Indian epic, the Ramayana and the Bhagavad Gita are the two most famous texts of India. The Ramayana tells the story of the great Avatar Rama. The Bhagavad Gita tells the story of Krishna. The Ramayana describes Rama as an "emissary from Agartha", who arrived on an air vehicle. This is quite extraordinary in that both the Buddhist and Hindu religions separately refer to Aghartha.

The first public scientific evidence occurred in 1947 when Rear Admiral Richard E. Byrd of the United States Navy flew directly to the North Pole and instead of going over the pole, actually entered the Inner Earth....The American press announced Admiral Byrd's discovery, however it was immediately suppressed by our good friends, the Secret Government. Ray Palmer, the editor of "Flying Saucer Magazine" did a detailed story on Admiral Byrd's discovers. The United States Government either bought, stole or destroyed almost every copy and then destroyed the plates at the printing press.

I have been told that the exact same thing happened in respect to an article done on Admiral Byrd's discovery by the "National Geographic". The magazine was released and the U.S. Government gobbled up almost every issue. If the story wasn't true how come the Government was so uptight?

Another interesting fact is that the United States Government does not let planes fly over the poles. All flights are directed to go around the Poles, and any airline pilot flying in these areas will tell you this. Another interesting phenomena is the fact that the icebergs are composed of fresh water and not salt water that drift from the Poles. Another interesting question is why it is warmer nearer the Poles than it is 600 to 1000 miles away from it.

In Dr. Raymond Bernard's book called "The Hollow Earth" he tells of a man who confirmed Admiral Byrd's story. Dr. Nephi Cotton of Los Angeles reported that one of his patients, a man of Nordic descent, told him the following story:

"I lived near the Arctic Circle in Norway. One summer my friend and I made up our minds to take a boat trip together and go as far as we could into the North country. So we put a months worth of food provisions in a small fishing boat and set to sea.

"At the end of one month we had traveled far into the north, beyond the Pole and into a strange new country. We were much astonished at the weather there. Warm, and at times at night it was almost too warm to sleep. Then we saw something so strange that we were both astonished. Ahead of the warm open sea we were on what looked like a great mountain. Into that mountain at a certain point that ocean seemed to be emptying. Mystified, we continued in that direction and found ourselves sailing into a vast canyon leading into the interior of the

Earth. We kept sailing and then we saw what surprised us... a Sun shining inside the Earth.

"The ocean that had carried us into the hollow interior of the Earth gradually became a river. This river led, as we came to realize later, all through the inner surface of the world from one end to the other. It can take you, if you follow it long enough, from the North Pole clear through to the South Pole.

"We saw that the inner surface of the Earth was divided, as the other one is, into both land and water. There is plenty of sunshine and both animal and vegetable life abounds there. We sailed further and further into this fantastic country, fantastic because everything was huge in size as compared with things on the outside. Plants are big, trees gigantic and finally we came to giants.

"They were dwelling in homes and towns, just as we do on the Earth surface, and they used a type of electrical conveyance like a mono-rail car, to transport people. It ran along the river's edge from town to town.

"Several of the Inner Earth inhabitants, huge giants, detected our boat on the river, and were quite amazed. They were, however, quite friendly. We were invited to dine with them in their homes, and so my companion and I separated, he going with one giant to that giant's home and I going with another giant to his home.

"My gigantic friend brought me home to his family and I was completely dismayed to see the huge size of all the objects in his home. The dinner table was colossal. A plate was put before me and filled with a portion of food so big it would have fed me abundantly an entire week. The Giant offered me a cluster of grapes and each grape was as big as one of our peaches. I tasted one and found it far sweeter than any I had ever tasted outside. In the interior of the Earth all the fruits and vegetables taste far better and more flavorsome than those we have on the outer surface of the Earth.

"We stayed with the Giants for one year, enjoying their companionship as much as they enjoyed knowing us. We observed many strange and unusual things during our visit with these remarkable people, and were continually amazed at their scientific progress and inventions. All of this time they were never unfriendly to us, and we were allowed to return to our own home in the same manner in which we came... in fact, they courteously offered their protection if we should need it for the return voyage."

Another different account about a visit to the hollow Earth was cited by another Norwegian by the name of Olaf Jansen, and was recorded in a book called "The Smoky God", written by Willis George Emerson. The term "Smoky God" refers to the Central Sun in the hollow interior of the Earth which is smaller and less brilliant than our outer Sun, of course, and hence appears as smoky...⁷

Some very influential people throughout history have believed in the hollow earth theory.

⁷ <http://www.thenewearth.org/InnerEarth.html>

Plato wrote of enormous subterranean tunnels both broad and narrow that made up the earth's interior. Dr. Edmond Halley, of comet fame, believed that all heavenly bodies were hollow and in a speech before the members of the Royal Society of London stated "Beneath the crust of the Earth, which is 500 feet thick, is a hollow void". Then there was Leonard Euler (1707-1783), noted mathematician and one of the founders of higher mathematics. He stated that "mathematically the Earth has to be hollow". He also believed there was a center sun inside the Earth's interior, which provided daylight to a splendid subterranean civilization.

Next came Captain John Cleves Symmes, war hero of the War of 1812. Once his studies led him to believe in a Hollow Earth, he used his knowledge to convince James McBride, a Miami Ohio millionaire. Mr. McBride used his political connections to Rep. Richard M. Johnson (D) of Kentucky [later vice-president under Van Buren 1837-1841] to petition congress to finance an expedition to claim the lands inside the earth for the U.S. The petition, by a vote of 56-46 was tabled.

The Hollow Earth was next theorized by William Reed in his 1906 book "The Phantom of The Poles". Based on his studies of early Arctic explorations and scientific evidence, he states that the Earth is not solid as widely believed, but hollow with openings at both ends. In the summary of his revolutionary theory, Reed states "The Earth is hollow. The Poles, so long sought, are phantoms. There are openings at the northern and southern extremities. In the interior are vast continents, oceans, mountains and rivers. Vegetable and animal life are evident in this New World and it is probably peopled by races unknown to dwellers on the Earth's surface"

Marshall B. Gardner reached the same conclusions after 20 years of research and published his finding in "A Journey to the Earth's Interior, or, Have the Poles Really Been Discovered?" in 1913, revised 1920. He was unaware of Reed or his theory at the time. Mr. Gardner puts forth the argument that neither Cook nor Peary reached the True North Pole since, according to the theory, it does not exist. Mr. Gardner states "Scientific societies that considered Cook's and Peary's claims concluded that in neither case could it be said authoritatively that the explorer had reached the pole".⁸

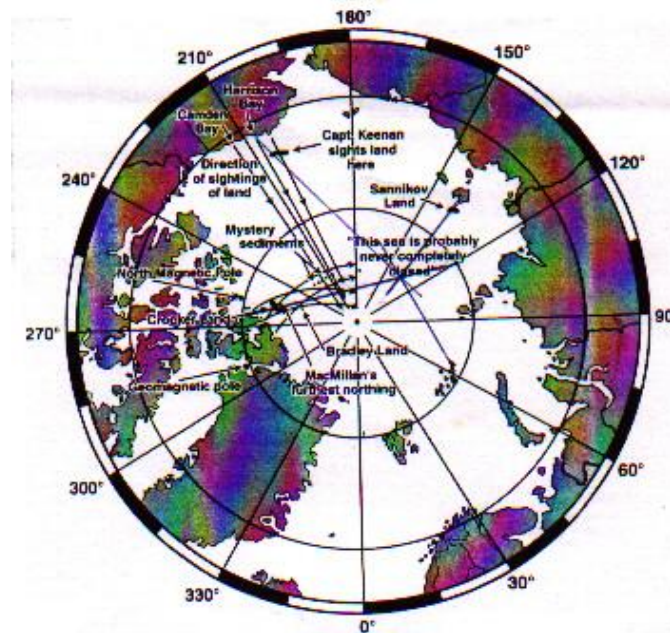
The Hubble Telescope and the NASA astronauts know about, but deny the polar openings. I own photographs of the Northern Polar Opening taken by NASA. They are completely aware of the earthly "portals", but for some, I assume, dark reason, are sworn to secrecy, (I do know why, I must add)...There are certain airlines that CLAIM to fly "over" the North Pole, but they do not. They barely cross over the Arctic Circle. The reason for that, there are no actual poles. Their compasses point or dip downward following the gravity core as the curvature of the entrance begins. Also the Shield of Volkgries blocks passage UNLESS a ship is being observed and permitted through, with great discretion. Those shields are generated by ancient high technology.⁹

⁸ <http://www.qsl.net/w5www/hollowearth.html>

⁹ <http://uforeview.tripod.com/hollownorth4.html>

Some have even attempted and publicized expeditions to see if they can find the entrance to the inner earth.

Would you be interested in a once-in-a-life-time chance to discover Our Hollow Earth first hand? We invite you to join us now on an expedition to Our Hollow Earth!"¹⁰ Those involved in this expedition have researched the many eyewitness accounts and have interpolated the opening to be "estimated that within about 600 miles from the North Pole on this meridian the expedition will reach the open ocean of inner earth. On the map below, directionals have been added to Jan Lamprecht's drawing of the Arctic (as blue lines) where they all cross at about 84.4 N Latitude, 141 E. Longitude."¹¹



So what do we make of all this stuff about the inner earth. Is the earth hollow? Is there a civilization there? The vast majority of the scientific community and the government of course deny that there is any possibility that the earth is hollow. If you go to Google Earth and look at the North Pole area all they show is an interpolation of the sea floor that shows no Hole. The scientific community says no, but on the other hand we have some very respected people who claim the earth is hollow and some even claim to have been there. This [video from NASA](#), from which the first photo in this article was taken, has some convinced that the earth is hollow with openings at the poles.

Does the Bible say anything about a hollow earth? Some claim that the Bible refers to a hollow earth and its inhabitants in several places such as Phil 2:10 "That at the name of Jesus every knee should bow, of things in heaven, and things in earth, and things under

¹⁰ <http://www.preclear.net/xfiles/modules.php?name=News&file=article&sid=85>

¹¹ *ibid.*

the earth” and again in Rev 5:3 “And no man in heaven, nor in earth, neither under the earth, was able to open the book, neither to look thereon.” And some claim that Job 26:7 makes a specific reference to the earth being hollow “He stretcheth out the north over the empty place, and hangeth the earth upon nothing.” So what should we believe? Is the earth hollow? If the Biblical evidence was conclusive, which I do not think that it is, then I would say yes the earth is hollow and there are inhabitants there. But at best I think the Biblical evidence is inconclusive, but leaves the concept as a possibility.

Therefore what can we conclude? There are 2 choices; either the earth is hollow and the government is covering it up, or the earth is not hollow and what these people experienced may have been the result of satanic deception via entering an altered state of consciousness or entering into another dimension. Note: During so called alien abductions people are taken places and see things, which defy logic and show evidence of occurring outside of our dimension.

Whether or not the earth is hollow and there is a civilization of aliens/demons there or whether it is all just a satanic deception is something that I cannot answer. However we need to consider why the capstone of the pyramid of the Great Seal is over top of a shape that resembles the Arctic and why the other half features the North Pole? I believe that these occurrences are making a connection between the coming world ruler and this theory, whether true or not, about this underground world. See my studies have led me to believe that the antichrist will claim to be descended from aliens and he will promote ideas like; aliens came to our planet long ago and started religions to keep people in line, that Jesus himself was an alien, that there is no God, etc. I believe that these claims will be the basis of the coming great deception, and will precipitate the great falling away and unfortunately the Bible tells us that many will fall for their wicked deception and lies and give allegiance to the antichrist when he appears to save our war ravished world after the destruction of WWII. In fact I believe that this coming great deception is not far away and that aliens will make themselves officially known in a public way within the next few years. Listen to their message and see if you see the connection.

“Yes,” the Master replies with a smile, “you are in the domain of the Arianni, the Inner World of the Earth. We shall not long delay your mission, and you will be safely escorted back to the surface and for a distance beyond. But now, Admiral, I shall tell you why you have been summoned here. Our interest rightly begins just after your race exploded the first atomic bombs over Hiroshima and Nagasaki, Japan. It was at that alarming time we sent our flying machines, the *“Flugelrads”*, to your surface world to investigate what your race had done. That is, of course, past history now, my dear Admiral, but I must continue on. You see, we have never interfered before in your race's wars, and barbarity, but now we must, for you have learned to tamper with a certain power that is not for Man, namely, that of atomic energy. Our emissaries have already delivered messages to the powers of your world, and yet they do not heed. Now you have been chosen to be witness here that our world does exist. You see, our Culture and Science is many thousands of years beyond your race, Admiral.”

I interrupted, “But what does this have to do with me, Sir?”

The Master's eyes seemed to penetrate deeply into my mind, and after studying me for a few moments he replied, "Your race has now reached the point of no return, for there are those among you who would destroy your very World rather than relinquish their power as they know it..."

I nodded, and the Master continued, "In 1945 and afterward, we tried to contact your race, but our efforts were met with hostility, our *Flugelrads* were fired upon. Yes, even pursued with malice and animosity by your fighter planes. So, now, I say to you, my son, there is a great storm gathering in your World, a black fury that will not spend itself for many years. There will be no answer in your Arms, there will be no safety in your Science. It may rage on until every flower of your culture is trampled, and all Human things are leveled in vast chaos. Your recent War was only a prelude of what is yet to come for your race. We here see it more clearly with each hour..do you say I am mistaken?"

"No," I answer, "it happened once before, the Dark Ages came and they lasted for more than five hundred years."

"Yes, my son," replied the Master, "the Dark Ages that will come now for your race will cover the Earth like a pall, but I believe that some of your race will live through the storm, beyond that, I cannot say. **We see at a great distance a new world stirring from the ruins of your race, seeking its lost and legendary treasures, and they will be here, my son, safe in our keeping. When that time arrives, we shall come forward again to help revive your culture and your race.** Perhaps, by then, you will have learned the futility of war and its strife...and after that time, certain of your culture and science will be returned for your race to begin anew. You, my son, are to return to the Surface World with this message....."¹²

Do you see the connection concerning these supposed inner earth dwellings and the antichrist? "**When that time arrives, we shall come forward again to help revive your culture and your race.**" That is the role that the antichrist will play.

The theory that aliens started life on earth and that there is no God is pure folly. Let's get the record straight, there is a God who existed before time and will always exist in the future and He created the universe and all that is in it. How do we know? Since physical matter, including us, exists it had to start somewhere. The evolutionists say it started from a Big Bang. Well if we got here from the Big Bang then where did the material for the Big Bang come from? See there had to be a beginning somewhere. That beginning is God. That is one of the primary definitions of God. God is the being who always existed and had no beginning. That is the first thing that He tells us in His Word. "In the beginning God..." God also revealed this fact to Moses when He told him His name. "And God said unto Moses, I AM THAT I AM: and he said, Thus shalt thou say unto the children of Israel, I AM hath sent me unto you." (Ex 3:14). God was telling Moses that he is the being that had always existed and had no beginning, that He was God. God also told us this in the New Testament in regards to Jesus Christ. "Behold, he cometh with

¹² <http://www.thenewearth.org/InnerEarth.html>

clouds; and every eye shall see him, and they also which pierced him: and all kindreds of the earth shall wail because of him. Even so, Amen. I am Alpha and Omega, the beginning and the ending, saith the Lord, which is, and which was, and which is to come, the Almighty.” (Rev 1:7,8)

And it was that being, the only true God, which gave us His Holy Word the Bible to teach us what we need to know about Him and life. And His Word tells us that He created us, not aliens. It also tells us that Jesus is the Son of God, 100% God and 100% Man, He is not an alien. These so called aliens and so called inner earth dwellers are nothing more than demons or their offspring trying to deceive people into believing falsehoods to pull them into Hell for eternity.

The Great Seal of the United States, which is reported to have been handed to Thomas Jefferson by a demon¹³, not only contains date ciphers regarding the United States and the coming New World Order but also contains a hidden map. Following the map leads to a theory regarding aliens and an inner earth which if believed will literally lead one to Hell’s Mouth. It is ironic that the latitude of the eye in the capstone had the same latitude of a location on earth called Hell’s Mouth.

The deception and the antichrist are coming and one day all who are alive will be given the choice of whether to follow the antichrist and take his “mark.” The consequence of not taking the mark is that you will not be able to buy or sell, the consequence of taking the mark is that you will be cast into Hell for all eternity. I pray that many will see through the deception and make the right choice.

As far as I know I am the only one that has discovered the date cipher of 2/22/2010 and discovered the hidden map. I take no credit for these findings but give all the credit to God who has opened my eyes to see these things in response to prayer.

God has also opened my eyes to understand many other events that will transpire during the last seven years on earth. There is much that you need to know about the end times so that you are not caught off guard, that is why I have written a book entitled *The Coming Epiphany; Your Guide to Understanding End Times Bible Prophecy*, which I am giving away for free at www.thecomingepiphany.com. I have also written an article entitled [Dollar Death Survival](#) outlining my financial strategy for weathering the financial storm brought on by the death of the dollar which may be related to 2/22/2010.

¹³ <http://www.cuttingedge.org/detail.cfm?ID=1984>